



COMMISSIONERS  
Fausto R. Bayonet, Chair  
Regina Y. Speed-Bost, Vice Chair  
Keith E. Bell  
Howard A. Denis  
T. Eloise Foster

GENERAL MANAGER  
Carla A. Reid

---

City of College Park Department of Public Works  
ATTN: Steven E Halpern, P.E., City Engineer  
9217 51st Avenue  
College Park, MD 20740

September 02, 2022

**RE: NORTHEAST BRANCH BASIN Contract No. CI6992C20 Task 42**

Dear Customer:

Crews working for WSSC Water will be in your neighborhood soon to replace and repair our aging pipes as part of our comprehensive sewer rehabilitation program. **Construction to replace approximately 1.33 miles of WSSC Water sewer mains is expected to begin on or about September 12<sup>th</sup>, 2022 and be complete by September 2023, weather permitting.** Final restoration of sidewalks, roadways and landscaping will take place within 90 days of construction completion. Projects completed during the winter months will be restored the following spring.

Please see the project map on the back to view the streets where work will be taking place. A WSSC Water inspector will supervise the work, which is being performed by IPR Northeast, LLC.

#### **WHAT TO EXPECT**

- You may see temporary above-ground (bypass) sewer pipes and pumps, which will be used to move the wastewater around the construction area. You also may hear noise coming from the pumps or nearby generator, which will run 24 hours a day.
- There are projects that require excavation to replace a sewer main. Whenever possible, WSSC Water works to minimize disruption to roadways and the environment. However, minimally invasive sewer rehabilitation methods include:
  - **Cured-in-Place Pipe (CIPP)**: Involves inserting a liner into the pipe. That liner is expanded and becomes a new pipe. This method uses either steam or Ultra Violet technology to cure the resin, which may on rare occasions produce a distinctive odor at very low levels. Once this process begins, work must continue until the lining is fully cured. Service laterals can generally be reinstated without excavation.
- For additional information regarding the sewer manhole and pipe rehabilitation process, visit: [www.wsscwater.com/srm](http://www.wsscwater.com/srm).

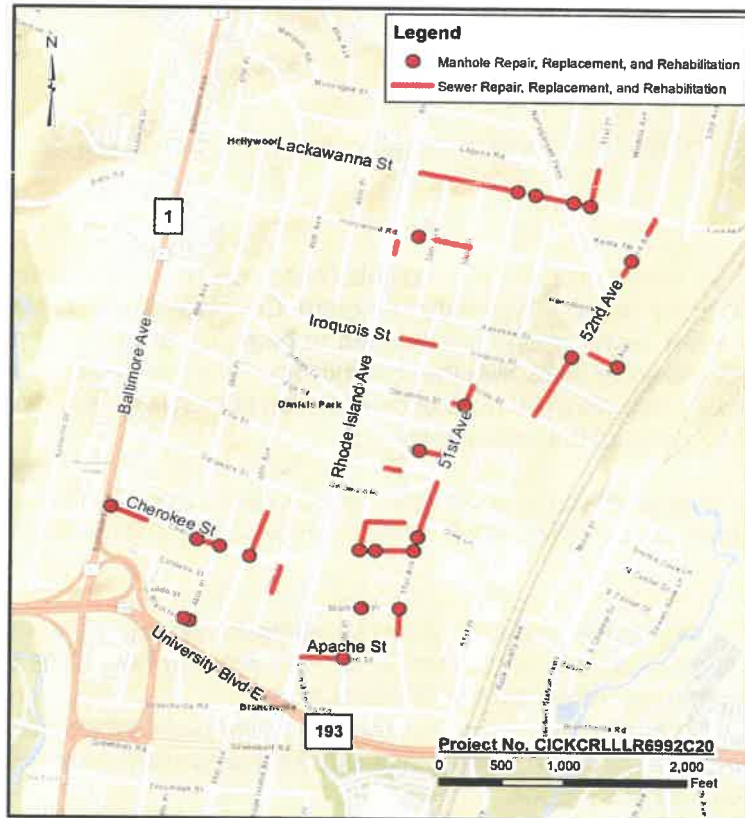
#### **IMPACTS**

- Anticipated work hours: **Monday-Friday, 8:00 a.m. - 4:00 p.m.** Work may occasionally extend beyond these hours to complete specific tasks.
- WSSC Water works to minimize impacts to your water service, however, there will be occasions when your water service is disrupted. WSSC Water will provide 48-hour advanced notice prior to any planned water service interruptions.
- There may be temporary changes to traffic patterns and/or parking restrictions. Any vehicles that have not been removed from the area (as denoted by "No Parking" signs) by the time the parking restrictions take effect will be towed to a nearby street at no cost to the owner.

- Directly impacted residents will receive 48-hour advanced notice prior to any water service interruptions or parking restrictions. During parking restriction hours, you will still have access to your home.
- **Please contact the Technical Contract Manager if you need special accommodations.**

**CONTACT INFORMATION/QUESTIONS**

- On-site WSSC Inspector: **Collin Wissmann, 240-736-7507, Collin.Wissmann@wsscwater.com**
- WSSC Water Contract Manager: **Jose Paz, 240-508-9543, Jose.Paz@wsscwater.com**
- **Sign-up at [www.wsscwater.com/CNS](http://www.wsscwater.com/CNS), to receive emails and/or text alerts so you can keep updated on work in your neighborhood.**



- **Contact WSSC Water's 24-Hour Emergency Call Center at [301.206.4002](tel:301.206.4002), in the event of a water or sewer emergency.**